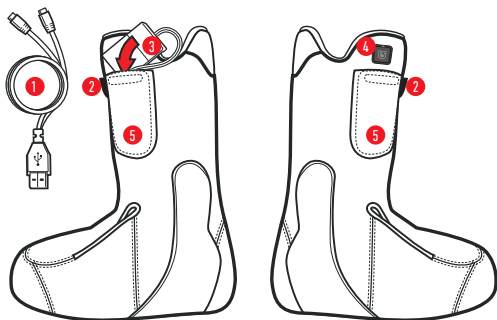


TOASTER LINER

WHAT'S IN THE BOX?



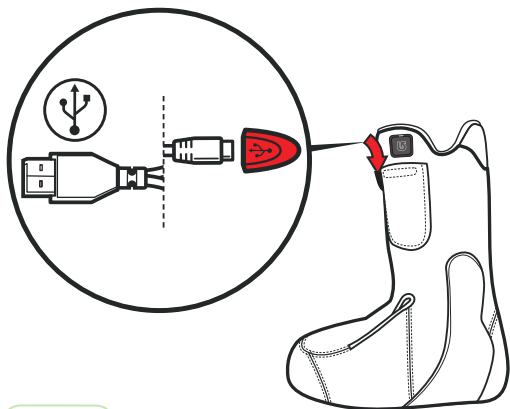
1. USB Plug
2. Micro USB Charging Port
3. Plug in Battery Pack
4. Control Switch
5. Battery Pocket

CHARGING THE BATTERIES

Plug the batteries into the battery connectors and place them inside the pocket.

Remove the micro USB plug from the pocket and plug into the USB cable.

Plug the USB cable into any USB charging socket like a car charger, AC wall charger, or computer.



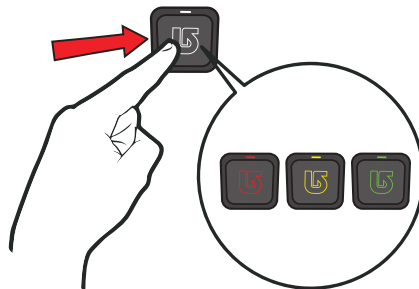
When charging, the LED on the control switch is flashing GREEN.

When fully charged the LED will be constant GREEN.

Full charging will take ~2-3hours.

GETTING WARM

To turn the heater on, press the control switch.
The power setting is indicated by a red, yellow, and green LED.



PUSH LIKE THIS	TO DO THIS	THE BUTTON WILL LOOK LIKE THIS
ONCE and count to 6	Turn it on HIGH Power	Red Light
AGAIN short press	Change to MEDIUM Power	Yellow Light
AGAIN short press	Change to LOW Power	Green Light
HOLD IT DOWN and count to 6	Turn it off	No Light (OFF)

PRODUCT CARE

These products can be wiped clean with mild soap and a wet cloth.

- Do not wash
- Do not tumble dry
- Do not dry clean
- Do not use bleach or fabric softener
- When not in use, charge & disconnect the battery pack
- Store in a cool, dry place

WARNINGS AND SAFETY INFORMATION

As applies to any electronic product, the mis-use of this product or failure to follow instructions may cause overheating, fire or personal injury. Always follow all the instructions and product labels

- Do not use the system if any of the cables are worn or damaged
- Do not place pins through the heater panel or garment containing a heater panel
- Never use this system with an infant, a child, an incapacitated person, anyone insensitive to heat, or anyone who cannot clearly understand the instructions and/or operate the controls
- Do not use this system if you have a pacemaker
- Do not attempt to open the battery pack
- Do not operate if the battery pack is wet
- Do not use the system if it is fully saturated OR wet while you are submerged in water
- Do not use the system to dry out the garment

TECHNICAL SPECIFICATION

Battery spec	3.7V 1500mAh, Li-polymer rechargeable
Battery size & weight	2x (39 x 61 x 3mm), 25g
Battery working time	2-5 hrs
Battery charge time	~3 hrs
Battery operating temp	-20°C - 50°C
Charger spec	USB 5V
Heat panel output	~5W panel
Heat panel size	270 x 350mm
Conformance	RoHS, WEEE, CE

W48 WARRANTY

USA 800-881-3138 / EU 00800-287-866-13
JPN +81(3) 5738-2555 / AU +61 (2) 99359000
burton.com/warranty